

UC Davis Athletics: Academic Performance Data 2000 to 2007

Prepared for the
UC Davis Academic Senate
and the
Athletics Administrative Advisory Committee (AAAC)

By
Susan Wilcox, SARI
Thomas Estes, SARI
Gillian Butler, SARI

APRIL 2009

Table of Contents

Summary	1
Methodology	3
Athletes per Sport	4
Admission Characteristics	6
Academic Performance	12
Graduation Characteristics.....	18
Tables	22

Summary

Admission Characteristics

- The total number of athletes entering as freshmen or transfer students in Fall 2007 was 209, compared to 234 in 2006 (pp 7, 24).
- In 2007:
 - 99.5% of incoming athletes (sponsored and unsponsored) and non-athletes were UC eligible (pp 7, 24).
 - 77% of incoming athletes were sponsored, compared to 57% in 2000 (pp 7, 24).
 - The mean composite SAT of incoming freshman athletes was 35 points lower than that of non-athletes (pp 8, 25).
 - The mean GPA of incoming freshman athletes has remained at 3.6 since 2000, while that of incoming freshman non-athletes has remained at 3.7 (pp 9, 25).
 - The mean excess A-G units of incoming freshman athletes was 10 compared to 14 for non-athletes, still well above the 2000 means of 8 and 9 units, respectively (pp 10, 25).

Performance

- The mean cumulative GPA of both athletes and non-athletes remained virtually unchanged between 2000 and 2007, and continues to be very similar for the two groups, differing by less than 0.1 points (pp 13, 26).
- The average units completed per quarter has shown a slow but steady increase from 2000 to 2007 for both athletes and non-athletes, although the rate of increase has been slightly greater for non-athletes (pp 13, 26).
- About 10% of non-athletes were on probation or subject to dismissal in Fall 2007 compared to 8% of athletes, an increase of 1 percentage point from 2005 for both populations (pp 14, 27).
- 38% of non-athletes attended summer school in 2007, compared to 24% of athletes (pp 15, 27).
- The average number of units taken in summer school in 2007 held steady for non-athletes and increased for athletes compared to 2006, from 9.2 to 9.1 for non-athletes and 7.4 to 7.8 for athletes (pp 15, 27).
- African-American and White students were overrepresented among athletes in Fall 2007, while Asian students were underrepresented (p 16).
- As among the population as a whole, cumulative GPA varies negligibly between athletes and non-athletes within ethnic subpopulations (pp 13, 16).
- African-American athletes were more likely than non-athletes to be on probation or subject to dismissal in Fall 2007, and Latino/Hispanic athletes were less likely than non-athletes (p 17).

Graduation Characteristics

- The four-year graduation rate for athletes who entered as freshmen increased from 2000, although athletes still lag behind non-athletes, at 35% compared to 50% (pp 19, 28).
- The five-year and six-year graduation rate for athletes who entered as freshmen has fallen steadily since 2000 (pp 19, 28);
 - The five year graduation rate for athletes fell from 85% for the 2000 cohort to 74% for the 2003 cohort
 - The six-year graduation rate for athletes fell from 89% for 2000 cohort to 79% for 2002 cohort.
- The two-year, three-year and four-year rates were all substantially lower for athletes who entered as transfer students than for non-athlete transfer entrants (p 28).
- Graduation characteristics are not reported separately for students who were admitted by exception because the number of athletes is too small to be statistically meaningful (p 28).
- Degrees in the social sciences continue to predominate among athletes (pp 20, 29), although graduating athletes are represented in all academic fields.
- Degrees in the biological sciences are equivalent for athletes and non-athletes, 20% of graduates. (p 29).
- The cumulative GPA's of graduating athletes and non-athletes are similar as are the number of total units completed.

Methodology

Changes from Previous Reports:

SARI continues to refine methodology, which results in small changes from report to report. In particular, identification of athletes continues to improve, with pervasive effects.

Notes:

“Athletes” in the graphs and tables refers to all athletes as defined by the Equity in Athletics Disclosure Act (EADA). “Grants-In-Aid Recipients” and “Athletic Participation” (from ICA participation rosters) are subsets of “Athletes”.

Students are retroactively identified as athletes, resulting in changes in the number of admitted athletes shown for a particular year from report to report.

Numbers of students on academic probation or subject to dismissal may be revised by the registrar and so may vary from report to report, even for historical data.

“Track” includes both indoor and outdoor track and is reported as an unduplicated count.

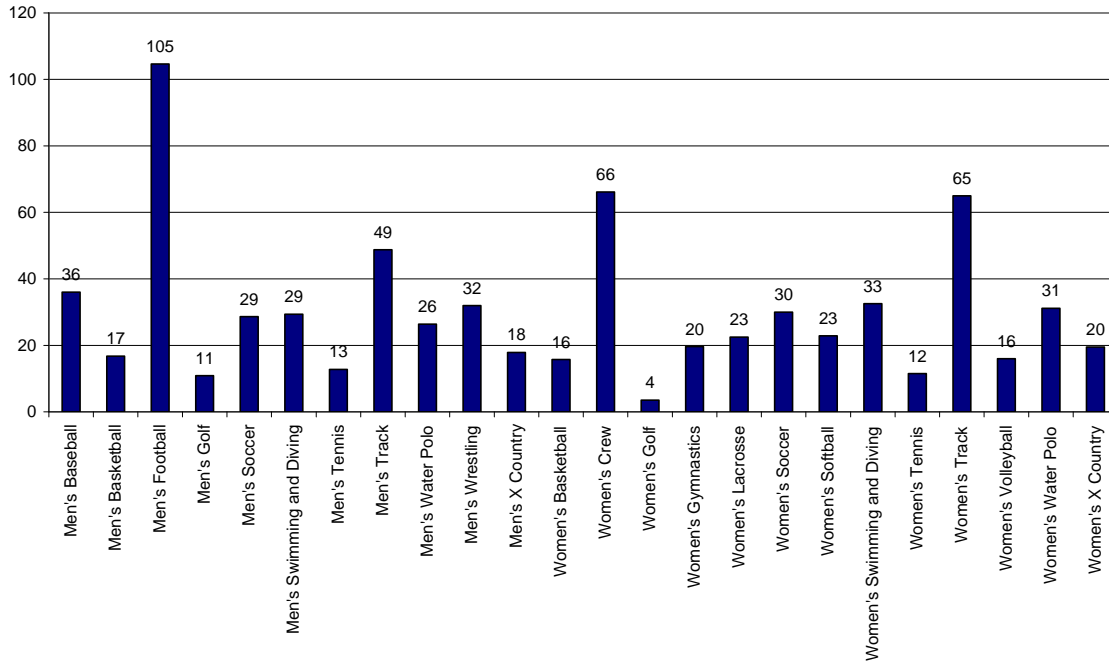
Cumulative SAT scores do not include converted ACT scores.

For further definitions and additional information, please refer to the Report Notes (p 23).

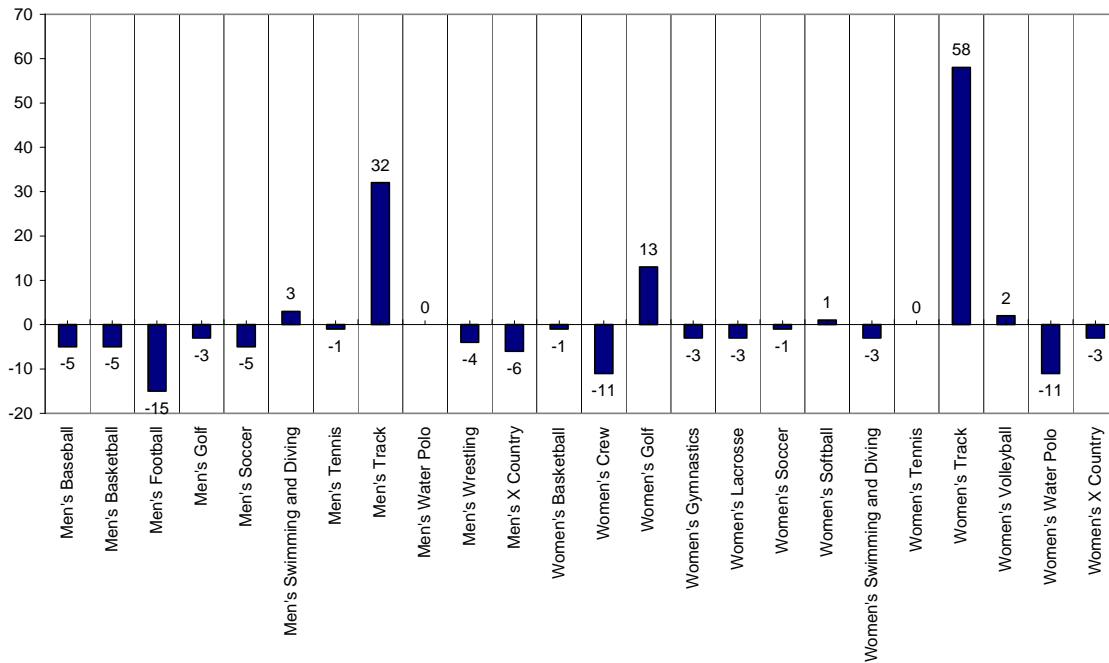
Athletes per Sport

Athletes per Sport

Average Number of Athletes per Sport, 2000 to 2007



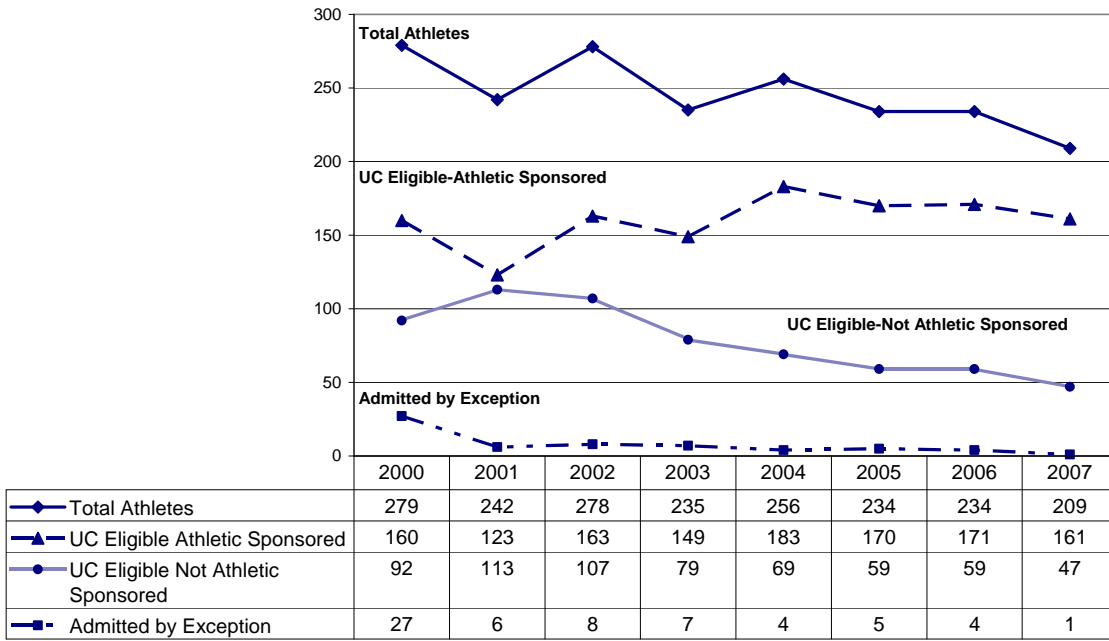
Change in the Number of Athletes Between 2000 and 2007



Admission Characteristics

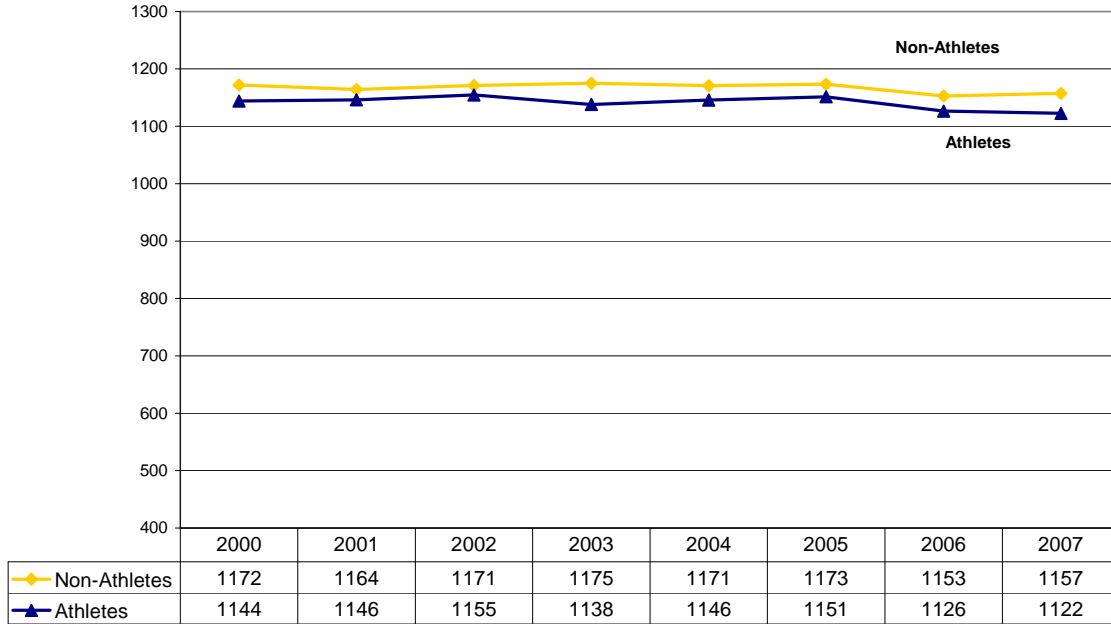
Characteristics at Admission

Incoming Athletes by Type of Admission, 2000 to 2007
(includes Freshmen and Transfer Students)

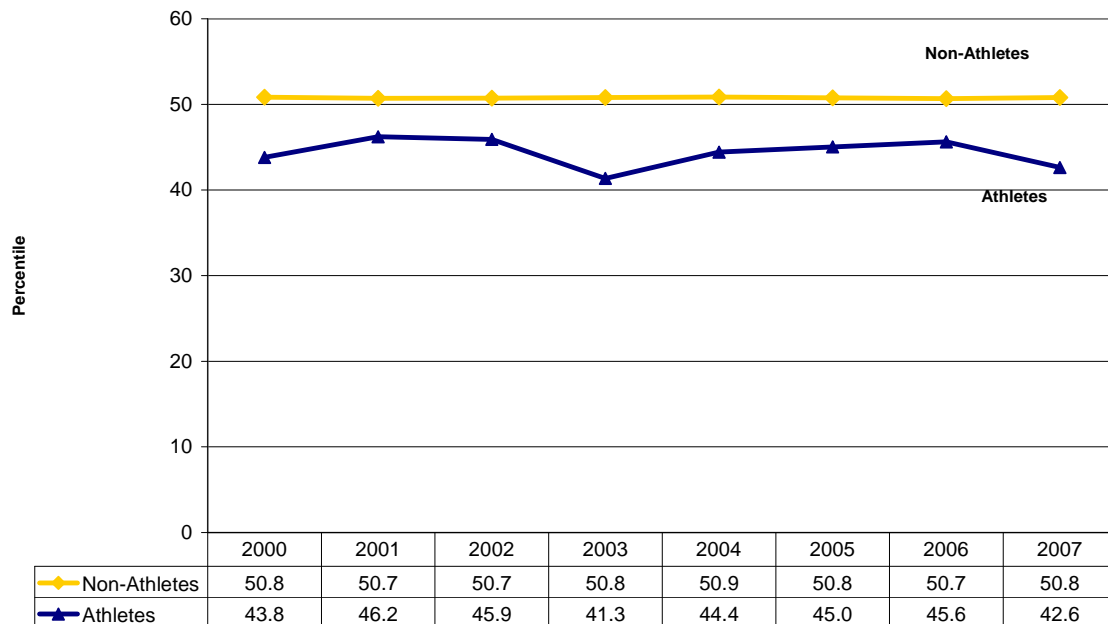


Characteristics at Admission

Mean SAT Composite Score of UCD Entering Freshmen, Athletes and Non-Athletes, 2000 to 2007

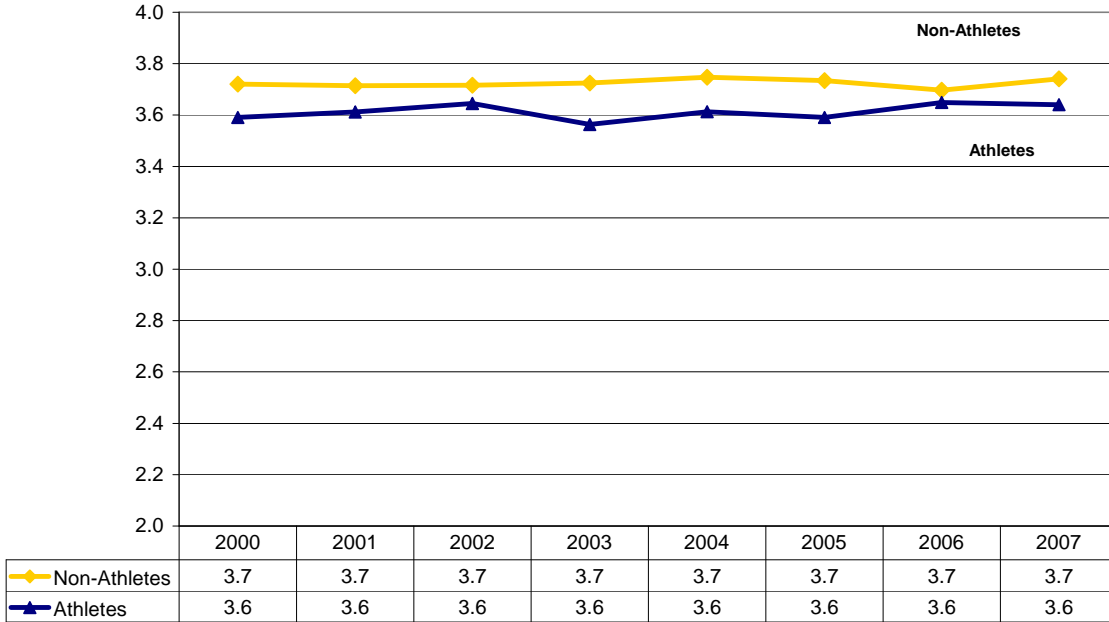


Relative Ranking of SAT Composite Scores of UCD Entering Freshmen, Athletes & Non-Athletes, 2000 to 2007

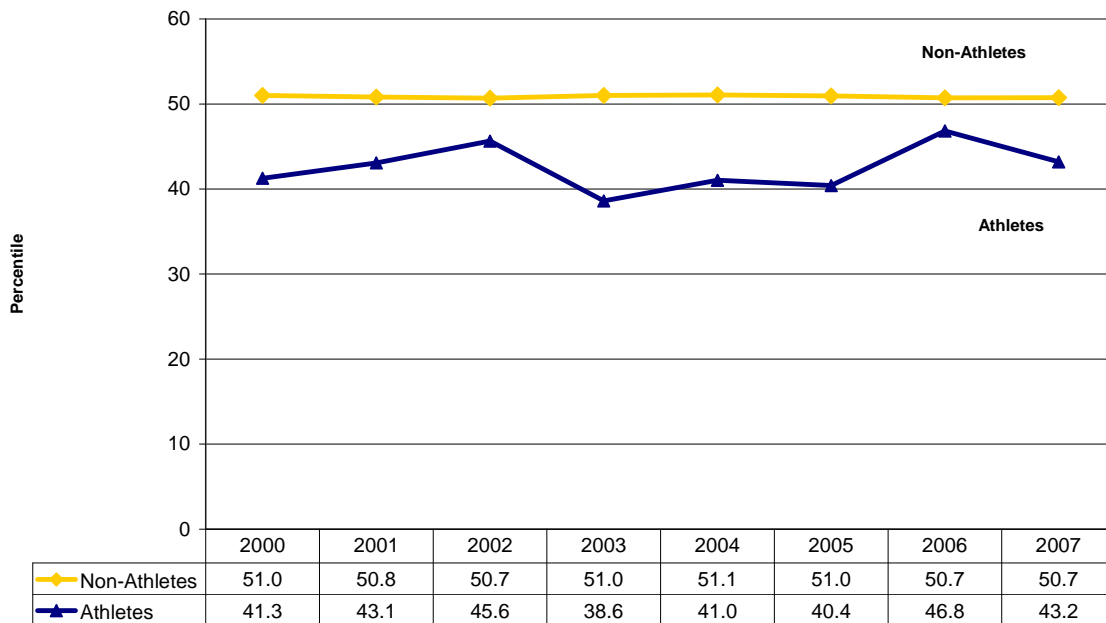


Characteristics at Admission

Mean High School GPA of UCD Entering Freshmen, Athletes and Non-Athletes, 2000 to 2007

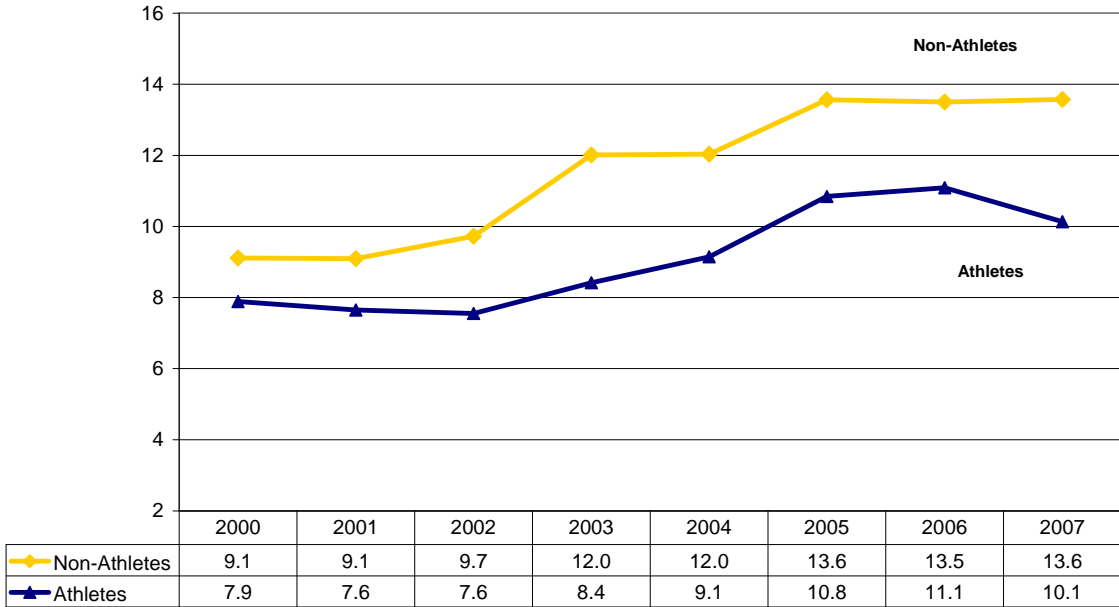


Relative Ranking of High School GPA of UCD Entering Freshmen, Athletes & Non-Athletes, 2000 to 2007

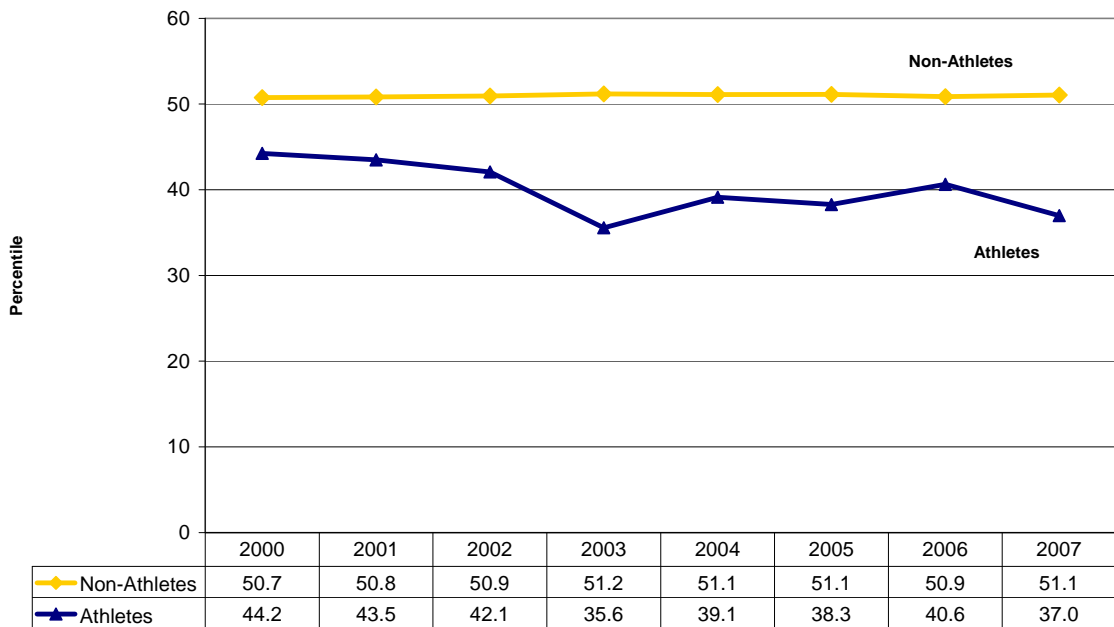


Characteristics at Admission

Mean Number of Extra A-G Units (Beyond 35 Units) of UCD Entering Freshmen, Athletes and Non-Athletes, 2000 to 2007

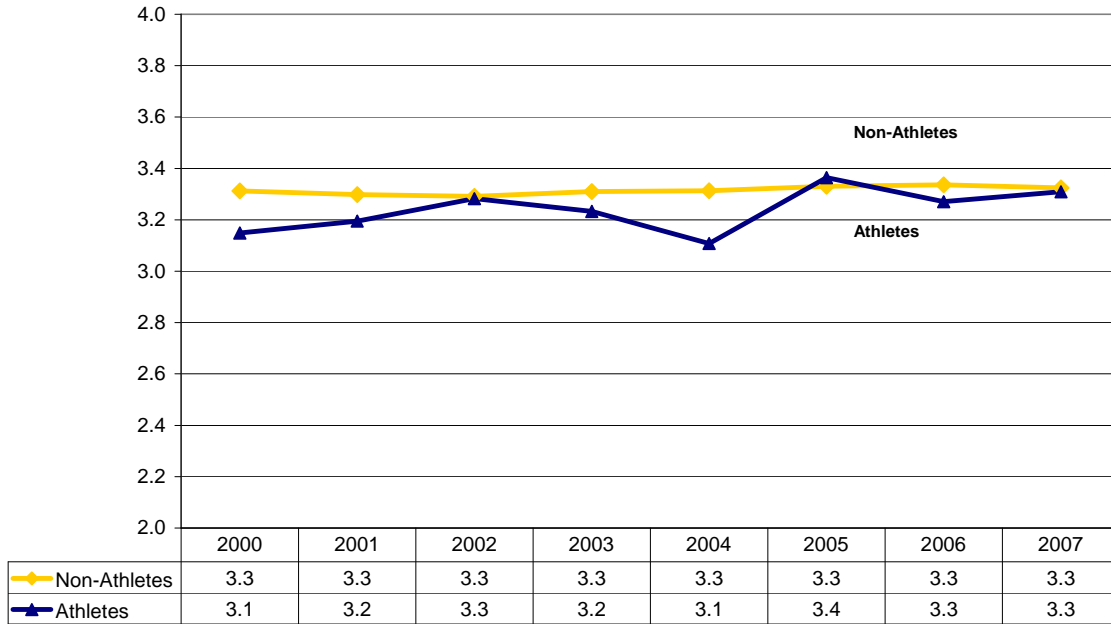


Relative Ranking of Number of Extra A-G Units of UCD Entering Freshmen, Athletes & Non-Athletes, 2000 to 2007

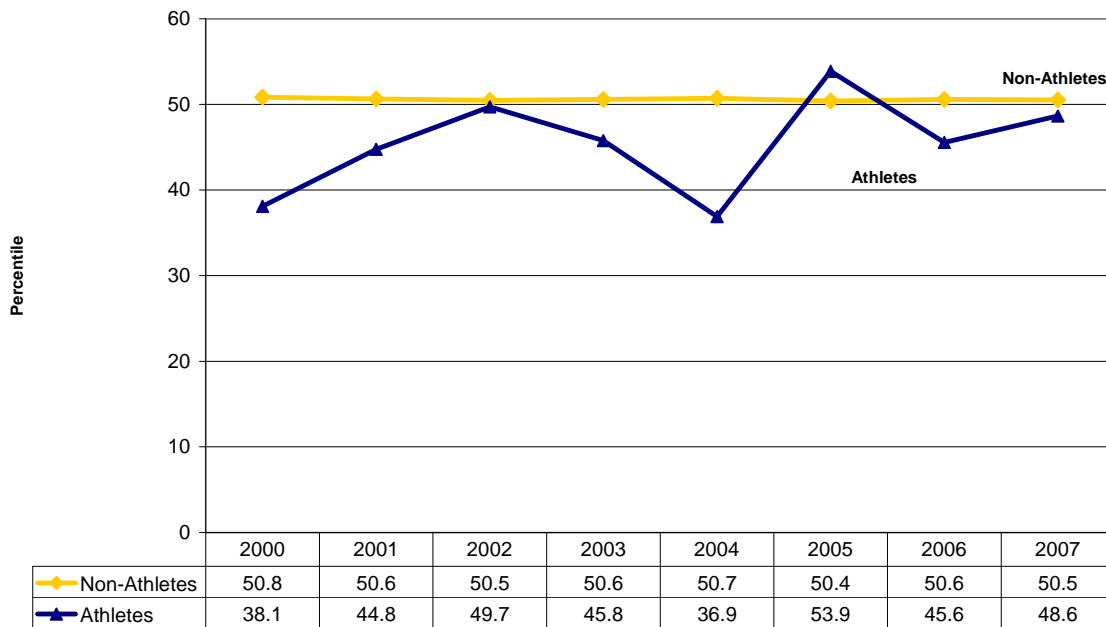


Characteristics at Admission

Mean Incoming GPA of UCD Entering Transfer Students, Athletes and Non-Athletes, 2000 to 2007



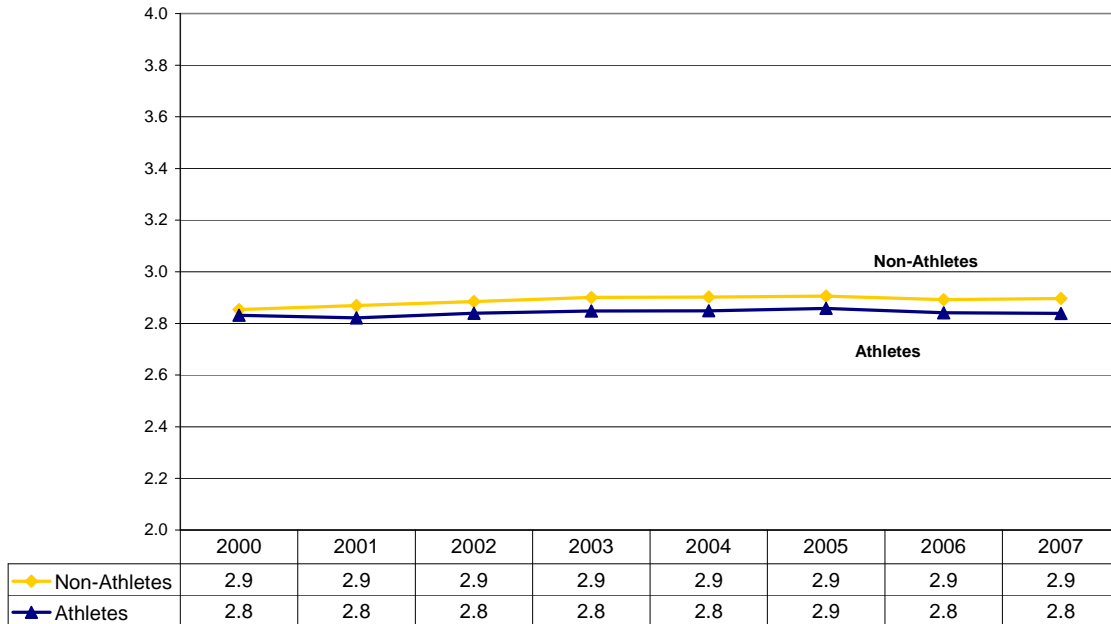
Relative Ranking of Incoming GPA of UCD Entering Transfer Students, Athletes & Non-Athletes, 2000 to 2007



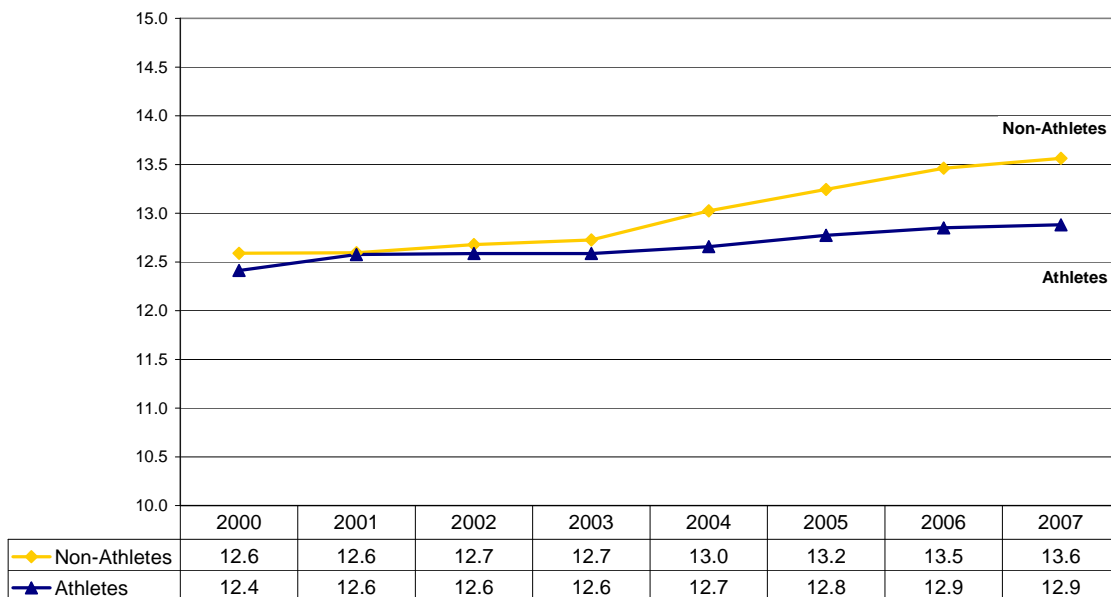
Academic Performance

Academic Performance at UC Davis

Cumulative GPA of Enrolled Athletes and Non-Athletes, as of End of Fall Quarter, 2000 to 2007

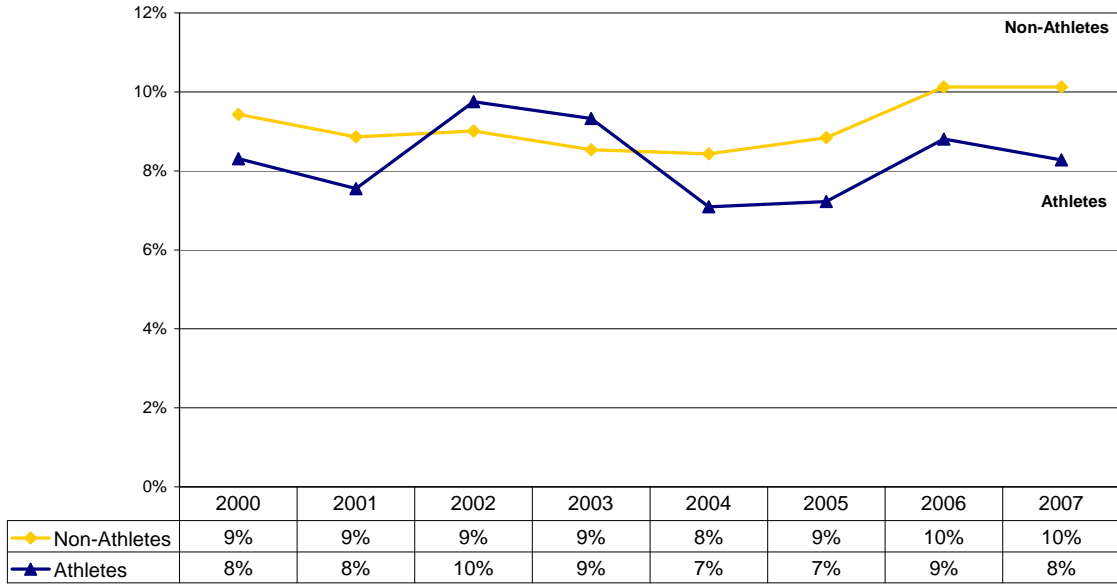


Average Units Passed per Quarter* for Enrolled Athletes and Non-Athletes, as of End of Fall Quarter, 2000 to 2007
(*excluding summer)



Academic Performance at UC Davis

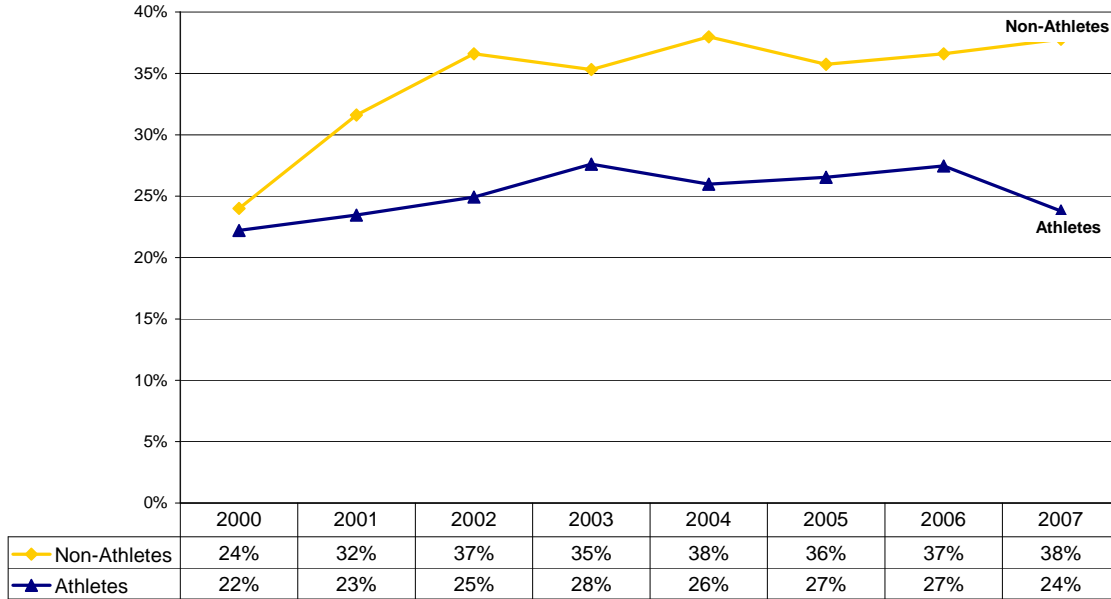
Percent of Enrolled Athletes and Non-Athletes on Probation or Subject to Dismissal, as of End of Fall Quarter, 2000 to 2007



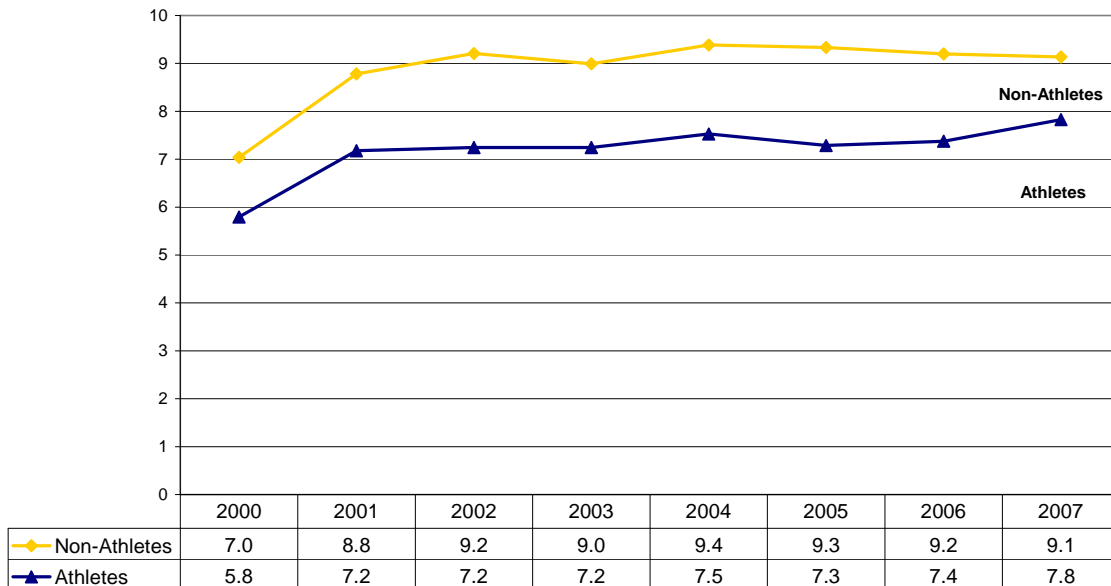
Academic Performance at UC Davis

Percent of Enrolled Athletes and Non-Athletes Attending Summer School at UC Davis, 2000 to 2006

(students with any *graded units attempted* in summer sessions, as of the census)

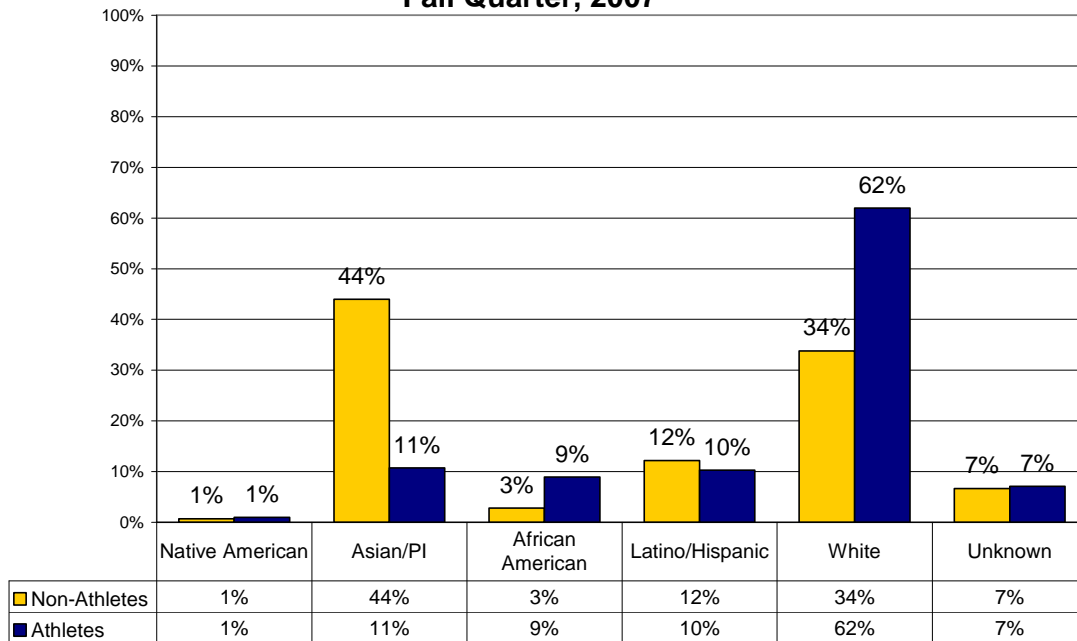


Mean Graded Summer Units Attempted by Enrolled Athletes and Non-Athletes Attending Summer School at UC Davis, 2000 to 2007

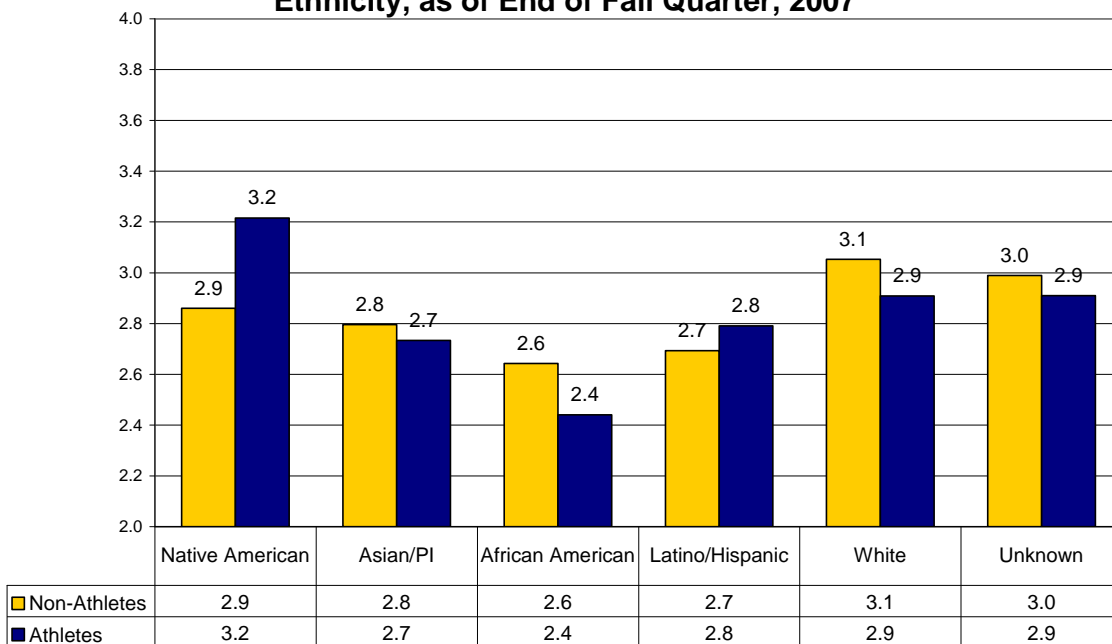


Academic Performance at UC Davis

**Race/Ethnicity of Enrolled Athletes and Non-Athletes,
Fall Quarter, 2007**

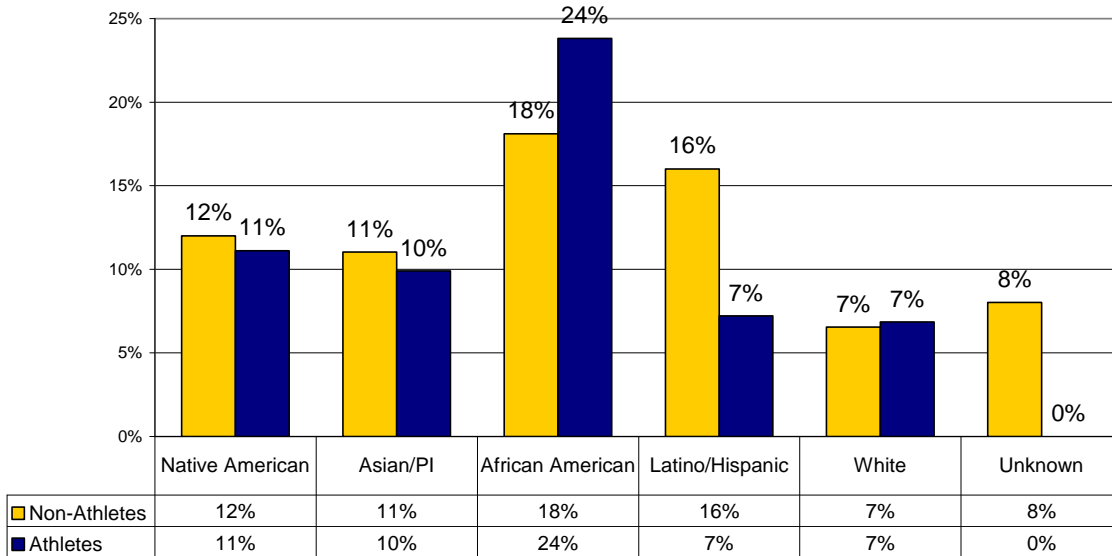


**Cumulative GPA of Enrolled Athletes & Non-Athletes, by
Ethnicity, as of End of Fall Quarter, 2007**



Academic Performance at UC Davis

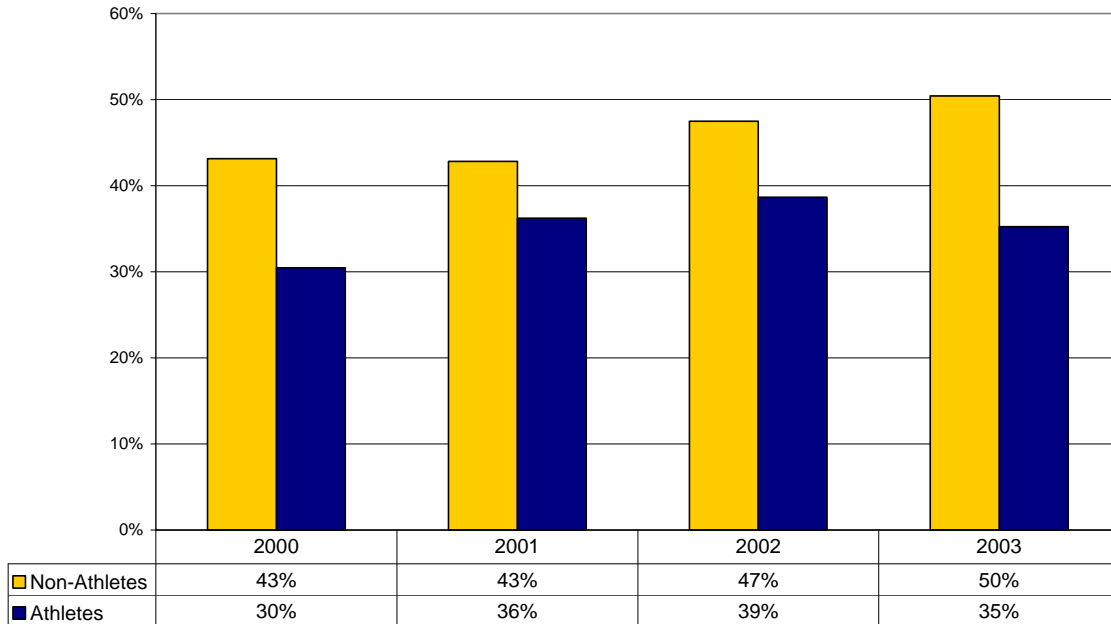
Percent of Enrolled Athletes and Non-Athletes on Probation or Subject to Dismissal, by Ethnicity, as of End of Fall Quarter, 2007



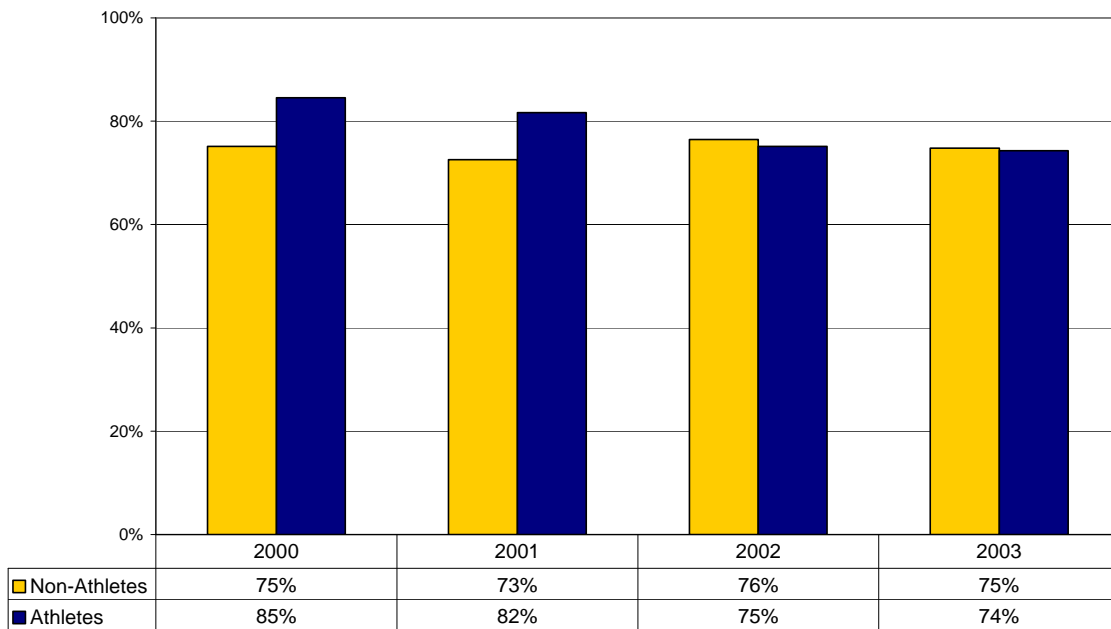
Graduation Characteristics

Characteristics at Graduation

4-Year Graduation Rates of Freshman Athletes and Non-Athletes at UC Davis, 2000 to 2003 Fall Cohorts

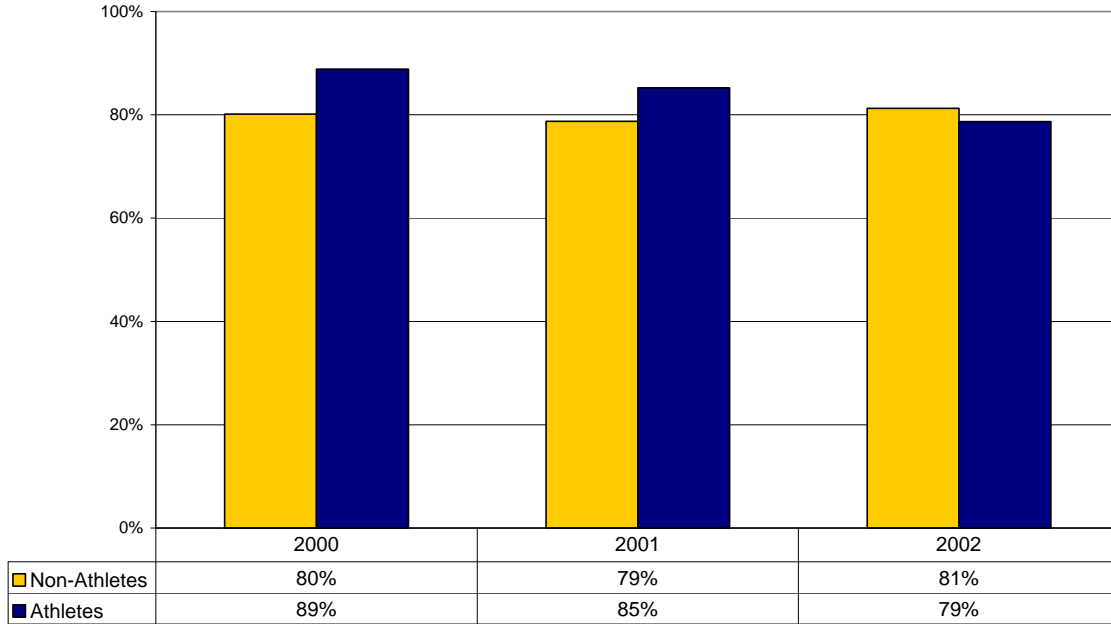


5-Year Graduation Rates of Freshman Athletes and Non-Athletes at UC Davis, 2000 to 2003 Fall Cohorts

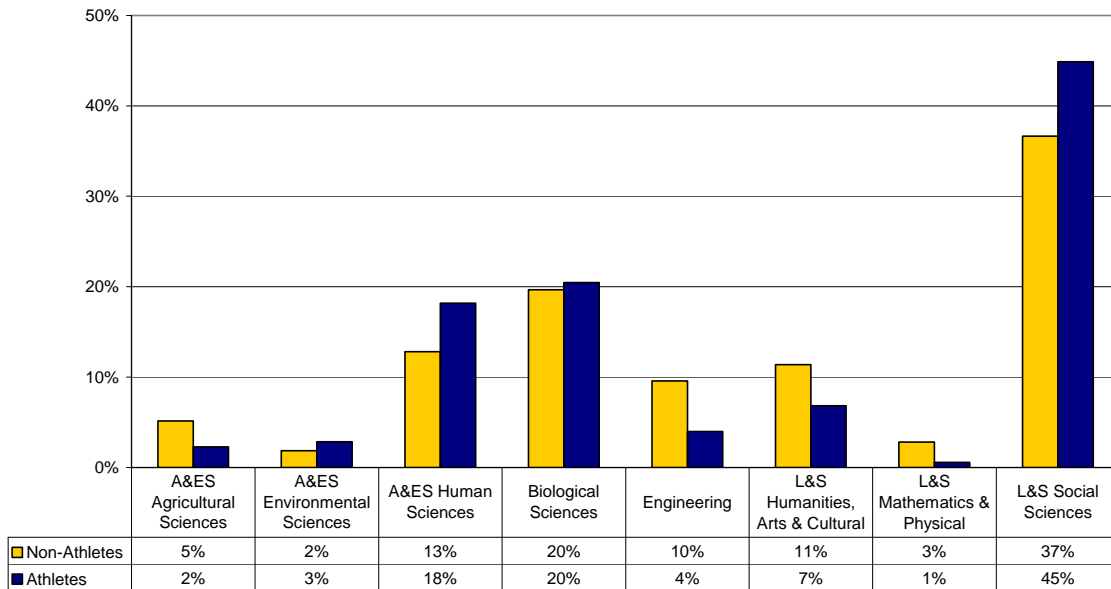


Characteristics at Graduation

6-Year Graduation Rates of Freshman Athletes and Non-Athletes at UC Davis, 2000 to 2002 Fall Cohorts

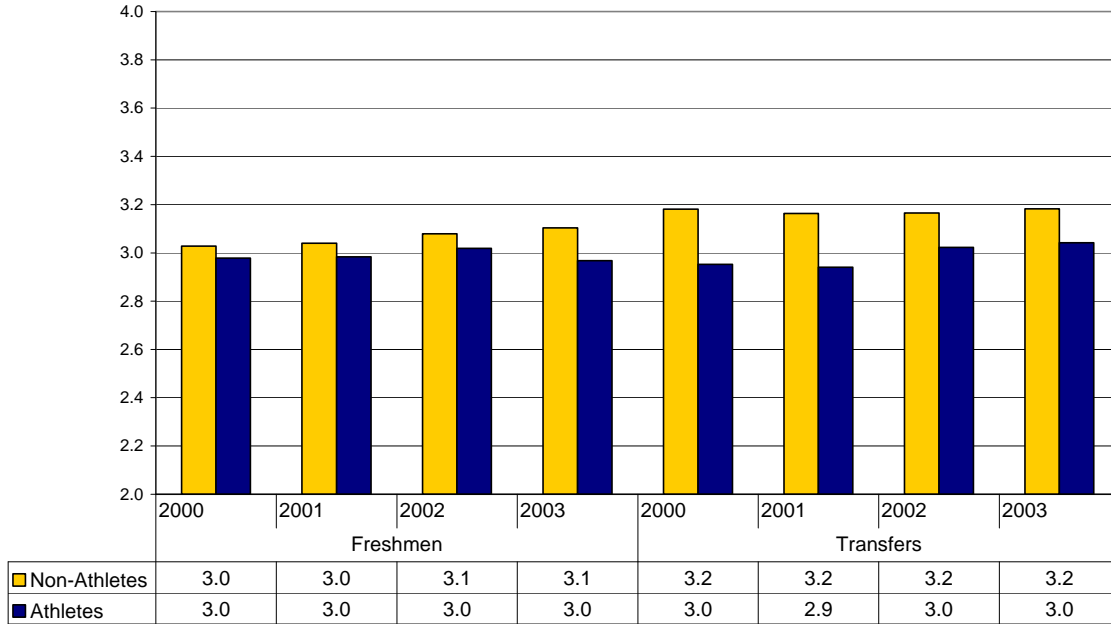


Athlete and Non-Athlete UC Davis Graduates from the 2003 Fall Cohort (Freshmen and Transfers), By College or Division, as of Fall 2007

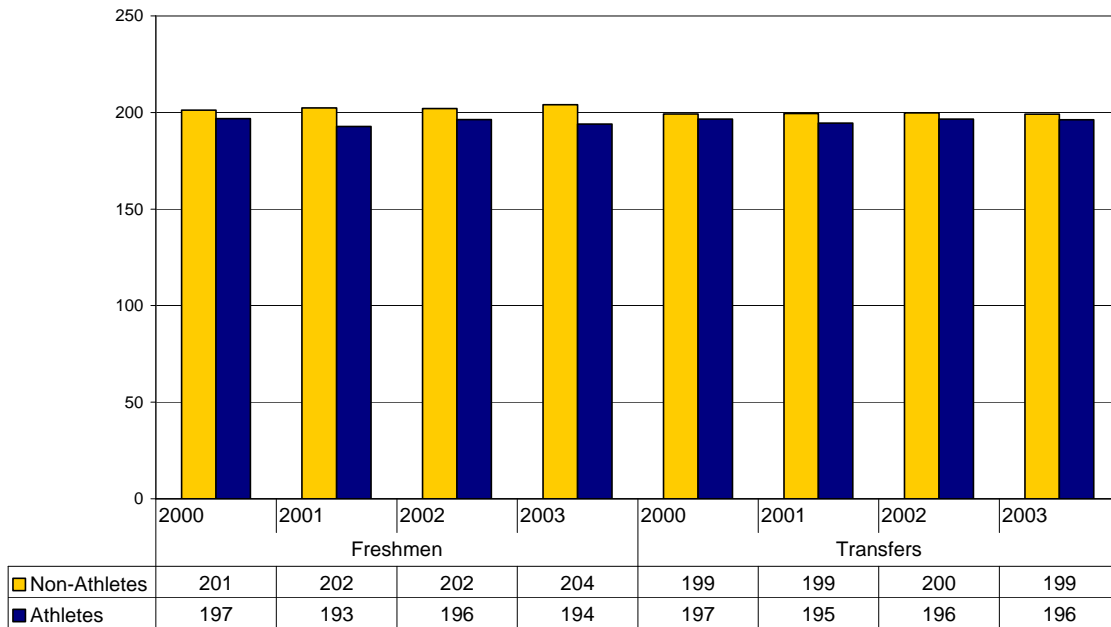


Characteristics at Graduation

**Final GPA of Athlete and Non-Athlete UC Davis Graduates,
2000 to 2003 Fall Cohorts**



**Total Units of Athlete and Non-Athlete UC Davis Graduates,
2000 to 2003 Fall Cohorts**



Tables

Tables

Report Notes:

“Athletes” refers to all athletes as defined by the Equity in Athletics Disclosure Act (EADA). “Grants-In-Aid Recipients” and “Athletic Participation” (from ICA participation rosters) are subsets of “Athletes”. Students who become athletes after the Fall quarter in which they matriculated are retrospectively assigned to their entering cohort as athletes. Thus the numbers of athletes in the Admission Characteristics table will change from report to report.

Demographics and Academic Performance Measures are provided for all students enrolled at UCD in the Fall quarter of the specified year. Cumulative measures are reported as of end of quarter; student standing reflects Fall quarter only.

Admission and Graduation Characteristics are provided for all students who entered UCD as new students in the Fall quarter of the specified year. The entering cohort is tracked to graduation. Unless otherwise specified, data include freshmen and transfers.

Units/Quarter

Units/Quarter is the mean units passed per quarter over all Fall, Winter and Spring quarters attended to date for all students enrolled in the Fall quarter of the specified year.

Summer units include only units attempted at UC Davis, However total units at graduation will include completed summer units transferred from other institutions.

Graduation Divisions

A&ES Ag Sci	College of Agricultural and Environmental Sciences – Agricultural Sciences
A&ES Envir Sci	College of Agricultural and Environmental Sciences – Environmental Sciences
A&ES Human Sci	College of Agricultural and Environmental Sciences – Human Sciences
A&ES College-wide	College of Agricultural and Environmental Sciences – Individual
Bio Science	Division/College of Biological Sciences
Engineering	College of Engineering
L&S HArCS	College of Letters and Science – Humanities, Arts and Cultural Studies
L&S M&PS	College of Letters and Science – Mathematical and Physical Sciences
L&S Soc Sci	College of Letters and Science – Social Sciences
L&S College-wide	Colleges of Letters and Science – Individual

Report of graduation division includes all graduates from cohort, as of Fall quarter preceding the report.

Percentages may not appear to sum to 100% due to rounding.

Tables

Admission Characteristics of Incoming Athletes & Non-Athletes at UC Davis, Fall Cohorts, 2000 to 2007

Entry Status	Year	Student Type	Student Type						Grants-In-Aid Athletes			Athletic Participation		
			Non-Athletes			Athletes			Count	Percent	Mean	Count	Percent	Mean
			Count	Percent	Mean	Count	Percent	Mean						
Entry Status	2000	Freshman	4,107	70%		233	84%		130	89%		184	82%	
		Transfer	1,771	30%		46	16%		16	11%		40	18%	
	2001	Freshman	4,216	70%		196	81%		93	83%		145	82%	
		Transfer	1,822	30%		46	19%		19	17%		32	18%	
	2002	Freshman	4,449	71%		225	81%		120	79%		175	81%	
		Transfer	1,851	29%		53	19%		31	21%		40	19%	
	2003	Freshman	4,577	73%		210	89%		125	91%		159	89%	
		Transfer	1,702	27%		25	11%		12	9%		19	11%	
	2004	Freshman	4,037	69%		229	89%		168	91%		192	89%	
		Transfer	1,794	31%		27	11%		17	9%		24	11%	
	2005	Freshman	4,174	71%		205	88%		127	89%		167	87%	
		Transfer	1,668	29%		29	12%		16	11%		25	13%	
	2006	Freshman	5,304	75%		209	89%		136	89%		170	89%	
		Transfer	1,768	25%		25	11%		17	11%		20	11%	
2007	Freshman	4,768	72%		187	89%		112	92%		122	88%		
	Transfer	1,813	28%		22	11%		10	8%		17	12%		
Admissions Process	UC Eligible Not Athletic Sponsored	2000	5,680	97%		92	33%		34	23%		66	29%	
		2001	5,850	97%		113	47%		32	29%		73	41%	
		2002	6,066	96%		107	38%		43	28%		75	35%	
		2003	6,051	96%		79	34%		26	19%		48	27%	
		2004	5,714	98%		69	27%		37	20%		55	25%	
		2005	5,699	98%		59	25%		15	10%		38	20%	
		2006	6,913	98%		59	25%		24	16%		39	21%	
		2007	6,420	98%		47	22%		19	16%		35	25%	
	UC Eligible Athletic Sponsored	2000	58	1%		160	57%		101	69%		134	60%	
		2001	53	1%		123	51%		76	68%		101	57%	
		2002	79	1%		163	59%		103	68%		133	62%	
		2003	55	1%		149	63%		108	79%		124	70%	
		2004	43	1%		183	71%		144	78%		158	73%	
		2005	45	1%		170	73%		126	88%		151	79%	
		2006	44	1%		171	73%		127	83%		147	77%	
		2007	29	0%		161	77%		102	84%		103	74%	
	Admitted by Exception	2000	140	2%		27	10%		11	8%		24	11%	
		2001	135	2%		6	2%		4	4%		3	2%	
		2002	155	2%		8	3%		5	3%		7	3%	
		2003	173	3%		7	3%		3	2%		6	3%	
		2004	74	1%		4	2%		4	2%		3	1%	
		2005	98	2%		5	2%		2	1%		3	2%	
		2006	115	2%		4	2%		2	1%		4	2%	
		2007	132	2%		1	0%		1	1%		1	1%	
	Subtotal	2000	5,878			279			146			224		
		2001	6,038			242			112			177		
		2002	6,300			278			151			215		
		2003	6,279			235			137			178		
		2004	5,831			256			185			216		
		2005	5,842			234			143			192		
		2006	7,072			234			153			190		
		2007	6,581			209			122			139		

Source: Student Affairs Research & Information.

Page 1

Note 1: Athletes are retroactively identified.

Note 2: Excludes Limited Status (UL), Second Baccalaureate (U2), and Post Baccalaureate (PB) students.

Note 3: Includes both full and part time students.

Tables

Admission Characteristics of Incoming Athletes & Non-Athletes at UC Davis, Fall Cohorts, 2000 to 2007

			Student Type						Grants-In-Aid Athletes			Athletic Participation		
			Non-Athletes			Athletes			Count	Percent	Mean	Count	Percent	Mean
			Count	Percent	Mean	Count	Percent	Mean						
Entering Freshmen Students	High School GPA	2000	4,091		3.7	233		3.6	130		3.6	184		3.6
		2001	4,207		3.7	196		3.6	93		3.6	145		3.6
		2002	4,442		3.7	223		3.6	118		3.6	174		3.6
		2003	4,572		3.7	210		3.6	125		3.5	159		3.6
		2004	4,036		3.7	229		3.6	168		3.6	192		3.6
		2005	4,174		3.7	203		3.6	126		3.6	166		3.6
		2006	5,302		3.7	209		3.6	136		3.6	170		3.6
	2007	4,765		3.7	187		3.6	112		3.6	122		3.7	
	SAT Composite (mean scores)	2000	4,093		1172	232		1144	129		1138	183		1145
		2001	4,209		1164	194		1146	92		1130	144		1144
		2002	4,436		1171	223		1155	119		1156	174		1154
		2003	4,565		1175	206		1138	123		1129	158		1139
		2004	4,035		1171	227		1146	166		1148	190		1153
		2005	4,174		1173	204		1151	126		1137	166		1154
		2006	5,303		1153	208		1126	135		1107	169		1120
	2007	4,762		1157	187		1122	112		1121	122		1137	
	Excess A-G Units (beyond 35 units)	2000	4,107		9.1	233		7.9	130		7.2	184		7.8
		2001	4,216		9.1	196		7.6	93		7.1	145		8.1
		2002	4,449		9.7	225		7.6	120		7.4	175		7.5
		2003	4,577		12.0	210		8.4	125		7.8	159		8.4
		2004	4,037		12.0	229		9.1	168		8.7	192		9.5
		2005	4,174		13.6	205		10.8	127		10.8	167		10.9
		2006	5,304		13.5	209		11.1	136		10.7	170		11.1
	2007	4,768		13.6	187		10.1	112		9.9	122		10.5	
	Comprehensive Review 2 (mean scores)	2000	1972		7303	78		6813	37		6662	59		6799
		2001	2,162		7024	93		6633	43		6424	70		6615
		2002	3,594		7490	171		7220	89		7225	132		7204
		2003	4,381		7883	196		7250	118		7108	151		7261
		2004	4,026		7949	224		7209	163		7116	189		7241
		2005	4,171		7986	197		7309	122		7207	160		7343
2006		5,299		7950	194		7373	126		7229	158		7338	
2007	4,768		8191	187		7601	112		7500	122		7665		
Entering Freshmen with Comprehensive Review 2 Scores	2000	CR2 Available	1,972		48%	78		33%	37		28%	59		32%
		CR2 NA	2,135		52%	155		67%	93		72%	125		68%
	2001	CR2 Available	2,162		51%	93		47%	43		46%	70		48%
		CR2 NA	2,054		49%	103		53%	50		54%	75		52%
	2002	CR2 Available	3,594		81%	171		76%	89		74%	132		75%
		CR2 NA	855		19%	54		24%	31		26%	43		25%
	2003	CR2 Available	4,381		96%	196		93%	118		94%	151		95%
		CR2 NA	196		4%	14		7%	7		6%	8		5%
	2004	CR2 Available	4,026		100%	224		98%	163		97%	189		98%
		CR2 NA	11		0%	5		2%	5		3%	3		2%
	2005	CR2 Available	4,171		100%	197		96%	122		96%	160		96%
		CR2 NA	3		0%	8		4%	5		4%	7		4%
	2006	CR2 Available	5,299		100%	194		93%	126		93%	158		93%
		CR2 NA	5		0%	15		7%	10		7%	12		7%
2007	CR2 Available	4,768		100%	187		100%	112		100%	122		100%	
	CR2 NA	0		0%	0		0%	0		0%	0		0%	
Entering Transfer Students	Transfer GPA	2000	1,749		3.3	46		3.1	16		3.1	40		3.1
		2001	1,797		3.3	44		3.2	18		3.1	32		3.2
		2002	1,824		3.3	50		3.3	29		3.3	37		3.3
		2003	1,685		3.3	25		3.2	12		3.2	19		3.2
		2004	1,778		3.3	26		3.1	17		3.2	23		3.1
		2005	1,665		3.3	29		3.4	16		3.4	25		3.4
		2006	1,763		3.3	25		3.3	17		3.3	20		3.3
		2007	1,811		3.3	22		3.3	10		3.4	17		3.3

Source: Student Affairs Research & Information.

Page 2

Note 1: Athletes are retroactively identified.

Note 2: Excludes Limited Status (UL), Second Baccalaureate (U2), and Post Baccalaureate (PB) students.

Note 3: Includes both full and part time students.

Tables

Academic Performance of Enrolled Athletes and Non-Athletes at UC Davis, Fall Quarter, 2000 to 2007

Class Level	Student Type	Year	Non-Athletes			Athletes			Grants-In-Aid Athletes			Athletic Participation		
			Count	Percent	Mean	Count	Percent	Mean	Count	Percent	Mean	Count	Percent	Mean
Freshman	Freshman	2000	5,711	29%		314	41%		186	36%		254	37%	
		2001	5,935	29%		329	37%		174	32%		256	34%	
		2002	6,024	28%		327	32%		176	30%		251	30%	
		2003	6,010	27%		322	31%		188	32%		251	30%	
		2004	5,309	24%		342	33%		244	39%		287	34%	
		2005	5,328	25%		320	33%		214	36%		268	33%	
		2006	6,297	29%		306	32%		201	34%		256	32%	
	2007	5,951	27%		286	30%		179	29%		203	27%		
	Sophomore	2000	3,348	17%		183	24%		134	26%		172	25%	
		2001	3,676	18%		189	21%		114	21%		157	21%	
		2002	3,769	17%		219	22%		117	20%		178	21%	
		2003	3,952	18%		202	20%		108	18%		160	19%	
		2004	4,010	18%		177	17%		97	15%		140	17%	
		2005	3,526	16%		202	21%		145	24%		178	22%	
		2006	3,585	17%		197	20%		131	22%		169	21%	
	2007	4,096	18%		193	20%		124	20%		164	21%		
	Junior	2000	5,102	26%		160	21%		105	21%		149	22%	
		2001	5,342	26%		206	23%		135	25%		186	25%	
		2002	5,837	27%		242	24%		143	24%		201	24%	
		2003	5,673	25%		265	26%		148	25%		212	26%	
		2004	6,090	28%		236	23%		132	21%		188	22%	
		2005	5,968	28%		210	22%		116	19%		174	22%	
		2006	5,548	26%		238	25%		165	28%		208	26%	
	2007	5,705	26%		209	22%		140	23%		179	23%		
	Senior	2000	5,289	27%		113	15%		86	17%		105	15%	
		2001	5,353	26%		163	18%		115	21%		153	20%	
		2002	5,972	28%		227	22%		150	26%		208	25%	
		2003	6,663	30%		240	23%		146	25%		208	25%	
2004		6,537	30%		269	26%		154	25%		226	27%		
2005		6,779	31%		233	24%		123	21%		189	23%		
2006		6,885	32%		224	23%		125	21%		178	22%		
2007	6,617	30%		254	27%		169	28%		218	29%			
Subtotal	0	19,450	100%		770	100%		511	100%		680	100%		
	0	20,306	100%		887	100%		538	100%		752	100%		
	0	21,602	100%		1,015	100%		586	100%		838	100%		
	0	22,298	100%		1,029	100%		590	100%		831	100%		
	0	21,946	100%		1,024	100%		627	100%		841	100%		
	0	21,601	100%		965	100%		598	100%		809	100%		
	0	22,315	103%		965	100%		622	104%		811	100%		
0	22,369	100%		942	100%		612	100%		764	100%			
Cumulative GPA (mean)	2000	19,316		2.9	765		2.8	509		2.8	678		2.9	
	2001	20,156		2.9	884		2.8	537		2.8	752		2.8	
	2002	21,479		2.9	1,014		2.8	586		2.8	838		2.9	
	2003	22,184		2.9	1,025		2.8	587		2.9	829		2.9	
	2004	21,846		2.9	1,020		2.8	623		2.8	838		2.9	
	2005	21,502		2.9	963		2.9	596		2.8	807		2.9	
	2006	22,201		2.9	963		2.8	621		2.8	810		2.8	
2007	22,228		2.9	942		2.8	612		2.8	764		2.8		
Average Units per Quarter (mean)	2000	19,220		12.6	766		12.4	509		12.5	679		12.6	
	2001	20,170		12.6	885		12.6	538		12.5	752		12.7	
	2002	21,498		12.7	1,014		12.6	586		12.6	838		12.7	
	2003	22,210		12.7	1,027		12.6	588		12.5	829		12.6	
	2004	21,849		13.0	1,023		12.7	626		12.4	841		12.7	
	2005	21,512		13.2	964		12.8	597		12.7	808		12.8	
	2006	22,219		13.5	962		12.9	619		12.8	808		12.8	
2007	22,226		13.6	941		12.9	612		12.8	763		13.0		

Source: Student Affairs Research & Information.

Page 1

Note 1: Excludes Limited Status (UL), Second Baccalaureate (U2), and Post Baccalaureate (PB) students.

Note 2: Includes both full and part time students.

Tables

Academic Performance of Enrolled Athletes and Non-Athletes at UC Davis, Fall Quarter, 2000 to 2007														
		Year	Student Type						Grants-In-Aid Athletes			Athletic Participation		
			Non-Athletes			Athletes			Count	Percent	Mean	Count	Percent	Mean
Summer School Units (mean)	Graded Units Attempted (includes all three summer sessions graded units attempted by students who attended summer school, as of the census date)	2000	4,668		7.0	171		5.8	109		5.9	161		5.8
		2001	6,419		8.8	208		7.2	129		7.2	177		7.1
		2002	7,906		9.2	253		7.2	128		7.0	211		7.2
		2003	7,872		9.0	284		7.2	159		6.8	233		6.9
		2004	8,335		9.4	266		7.5	156		7.6	215		7.5
		2005	7,720		9.3	256		7.3	152		7.0	205		7.2
		2006	8,167		9.2	265		7.4	169		7.1	218		7.2
		2007	8,451		9.1	224		7.8	147		7.4	176		7.8
% Attending Summer School	Did not Attend Summer School	2000	14,782	76%		599	78%		402	79%		519	76%	
		2001	13,887	68%		679	77%		409	76%		575	76%	
		2002	13,696	63%		762	75%		458	78%		627	75%	
		2003	14,426	65%		745	72%		431	73%		598	72%	
		2004	13,611	62%		758	74%		471	75%		626	74%	
		2005	13,881	64%		709	73%		446	75%		604	75%	
		2006	14,148	63%		700	73%		453	73%		593	73%	
	2007	13,918	62%		718	76%		465	76%		588	77%		
	Attended Summer School (includes all three summer sessions graded units attempted as of the census date)	2000	4,668	24%		171	22%		109	21%		161	24%	
		2001	6,419	32%		208	23%		129	24%		177	24%	
		2002	7,906	37%		253	25%		128	22%		211	25%	
		2003	7,872	35%		284	28%		159	27%		233	28%	
		2004	8,335	38%		266	26%		156	25%		215	26%	
		2005	7,720	36%		256	27%		152	25%		205	25%	
2006		8,167	37%		265	27%		169	27%		218	27%		
2007	8,451	38%		224	24%		147	24%		176	23%			
Academic Standing	Good Standing	2000	17,616	91%		706	92%		466	91%		630	93%	
		2001	18,506	91%		820	92%		496	92%		707	94%	
		2002	19,655	91%		916	90%		533	91%		769	92%	
		2003	20,395	91%		933	91%		540	92%		762	92%	
		2004	20,065	91%		951	93%		580	93%		788	94%	
		2005	19,660	91%		891	92%		560	94%		756	93%	
		2006	20,127	90%		880	91%		571	92%		740	91%	
	2007	20,104	90%		864	92%		559	91%		709	93%		
	Probation or Subject to Dismissal	2000	1,834	9%		64	8%		45	9%		50	7%	
		2001	1,800	9%		67	8%		42	8%		45	6%	
		2002	1,947	9%		99	10%		53	9%		69	8%	
		2003	1,903	9%		96	9%		50	8%		69	8%	
		2004	1,881	8%		73	7%		47	8%		53	6%	
		2005	1,941	9%		74	7%		38	6%		53	6%	
2006		2,188	10%		85	9%		51	9%		71	9%		
2007	2,265	10%		78	8%		53	9%		55	7%			

Source: Student Affairs Research & Information.

Page 2

Note 1: Excludes Limited Status (UL), Second Baccalaureate (U2), and Post Baccalaureate (PB) students.

Note 2: Includes both full and part time students.

Tables

Graduation Rates & Performance of Athletes & Non-Athletes at UC Davis, 2000 to 2003 Fall Cohorts														
	Cohort	Student Type						Grants-In-Aid Athletes			Athletic Participation			
		Non-Athletes			Athletes			Count	Percent	Mean	Count	Percent	Mean	
		Count	Percent	Mean	Count	Percent	Mean				Count	Percent	Mean	
Freshman Cohort	2000	4,107			233			130			184			
	2001	4,216			196			93			145			
	2002	4,449			225			120			175			
	2003	4,577			210			125			159			
Graduation Rates (cumulative n, %)	4 yrs or less	2000	1,772	43%	71	30%		34	26%		58	32%		
		2001	1,805	43%	71	36%		30	32%		53	37%		
		2002	2,113	47%	87	39%		41	34%		72	41%		
		2003	2,308	50%	74	35%		36	29%		60	38%		
	5 yrs or less	2000	3,085	75%	197	85%		115	88%		161	88%		
		2001	3,059	73%	160	82%		74	80%		123	85%		
		2002	3,401	76%	169	75%		96	80%		143	82%		
		2003	3,424	75%	156	74%		91	73%		127	80%		
	6 yrs or less	2000	3,290	80%	207	89%		118	91%		170	92%		
		2001	3,321	79%	167	85%		78	84%		128	88%		
		2002	3,615	81%	177	79%		102	85%		149	85%		
		2003	N/A	N/A	N/A	N/A		N/A	N/A		N/A	N/A		
Transfer Cohort	2000	1,771			46			16			40			
	2001	1,822			46			19			32			
	2002	1,851			53			31			40			
	2003	1,702			25			12			19			
Graduation Rates (cumulative n, %) (cumulative n, %)	2 yrs or less	2000	691	39%	11	24%		2	13%		10	25%		
		2001	734	40%	11	24%		3	16%		6	19%		
		2002	822	44%	13	25%		8	26%		11	28%		
		2003	785	46%	7	28%		6	50%		7	37%		
	3 yrs or less	2000	1,307	74%	32	70%		9	56%		28	70%		
		2001	1,365	75%	27	59%		8	42%		19	59%		
		2002	1,435	78%	31	58%		18	58%		24	60%		
		2003	1,319	77%	14	56%		9	75%		12	63%		
	4 yrs or less	2000	1,444	82%	40	87%		13	81%		35	88%		
		2001	1,503	82%	37	80%		14	74%		26	81%		
		2002	1,556	84%	40	75%		25	81%		31	78%		
		2003	1,423	84%	19	76%		10	83%		15	79%		
Total Units at Graduation Graduation	Freshmen	2000	3,399		201		197	120		195	173		197	
		2001	3,388		202		168	193		190	128		192	
		2002	3,615		202		177	196		195	149		195	
		2003	3,424		204		156	194		190	127		193	
	Transfers	2000	1,509		199		40	197		13	193		196	
		2001	1,568		199		39	195		16	195		198	
		2002	1,611		200		44	196		28	197		197	
		2003	1,455		199		20	196		11	188		190	
Final GPA at Graduation Graduation	Freshmen	2000	3,399		3.0		211	3.0		120	3.0		173	3.0
		2001	3,388		3.0		168	3.0		78	3.0		128	3.0
		2002	3,615		3.1		177	3.0		102	3.0		149	3.0
		2003	3,424		3.1		156	3.0		91	2.9		127	3.0
	Transfers	2000	1,509		3.2		40	3.0		13	2.9		35	2.9
		2001	1,568		3.2		39	2.9		16	2.8		27	3.1
		2002	1,611		3.2		44	3.0		28	3.1		35	3.0
		2003	1,455		3.2		20	3.0		11	3.1		16	3.1

Source: Student Affairs Research & Information.

Note 1: Excludes Limited Status (UL), Second Baccalaureate (U2), and Post Baccalaureate (PB) students.

Note 2: Includes both full and part time students.

Tables

Graduation Division of Athletes & Non-Athletes at UC Davis, 2000 to 2003 Fall Cohorts (Freshmen and Transfers)										
		Student Type				Grants-In-Aid		Athletic		
		Non-Athletes		Athletes		Athletes		Participation		
Graduation College or Division	Cohort	Count	Percent	Count	Percent	Count	Percent	Count	Percent	
	2000	A&ES Agricultural Sciences	285	6%	9	4%	2	2%	5	2%
		A&ES Environmental Sciences	113	2%	9	4%	5	4%	8	4%
		A&ES Human Sciences	629	13%	41	16%	22	17%	35	17%
		A&ES: College-wide	6	0%	1	0%			1	0%
		Biological Sciences	826	17%	33	13%	21	16%	28	13%
		Engineering	621	13%	17	7%	9	7%	14	7%
		L&S Humanities, Arts & Cultural Studies	541	11%	17	7%	6	5%	11	5%
		L&S Mathematics & Physical Sciences	149	3%	2	1%	1	1%	2	1%
		L&S Social Sciences	1731	35%	122	49%	67	50%	104	50%
		L&S: College-wide	6	0%						
	Subtotal	4907	100%	251	100%	133	100%	208	100%	
	2001	A&ES Agricultural Sciences	255	5%	8	4%	1	1%	6	4%
		A&ES Environmental Sciences	111	2%	3	1%	2	2%	3	2%
		A&ES Human Sciences	594	12%	27	13%	13	14%	19	12%
		A&ES: College-wide	5	0%						
		Biological Sciences	891	18%	41	20%	22	23%	34	22%
		Engineering	676	14%	11	5%	2	2%	5	3%
		L&S Humanities, Arts & Cultural Studies	525	11%	23	11%	10	11%	18	12%
		L&S Mathematics & Physical Sciences	113	2%	4	2%	1	1%	3	2%
		L&S Social Sciences	1786	36%	90	43%	43	46%	67	43%
		L&S: College-wide								
	Subtotal	4956	100%	207	100%	94	100%	155	100%	
	2002	A&ES Agricultural Sciences	240	5%	7	3%	4	3%	4	2%
		A&ES Environmental Sciences	116	2%	4	2%	4	3%	4	2%
		A&ES Human Sciences	637	12%	27	12%	16	12%	22	12%
		A&ES: College-wide	3	0%						
		Biological Sciences	966	18%	51	23%	30	23%	44	24%
		Engineering	587	11%	7	3%	3	2%	6	3%
		L&S Humanities, Arts & Cultural Studies	597	11%	21	10%	12	9%	17	9%
		L&S Mathematics & Physical Sciences	140	3%	6	3%	3	2%	5	3%
		L&S Social Sciences	1939	37%	98	44%	58	45%	82	45%
		L&S: College-wide	1	0%						
	Subtotal	5226	100%	221	100%	130	100%	184	100%	
	2003	A&ES Agricultural Sciences	251	5%	4	2%	2	2%	3	2%
		A&ES Environmental Sciences	91	2%	5	3%	1	1%	2	1%
		A&ES Human Sciences	625	13%	32	18%	18	18%	27	19%
		A&ES: College-wide	2	0%						
		Biological Sciences	959	20%	36	20%	20	20%	30	21%
		Engineering	467	10%	7	4%	3	3%	6	4%
		L&S Humanities, Arts & Cultural Studies	555	11%	12	7%	8	8%	8	6%
		L&S Mathematics & Physical Sciences	137	3%	1	1%			1	1%
		L&S Social Sciences	1788	37%	79	45%	50	49%	66	46%
L&S: College-wide		4	0%							
Subtotal		4879	100%	176	100%	102	100%	143	100%	

Source: Student Affairs Research & Information.

Note 1: Excludes Limited Status (UL), Second Baccalaureate (U2), and Post Baccalaureate (PB) students.

Note 2: Includes both full and part time students.